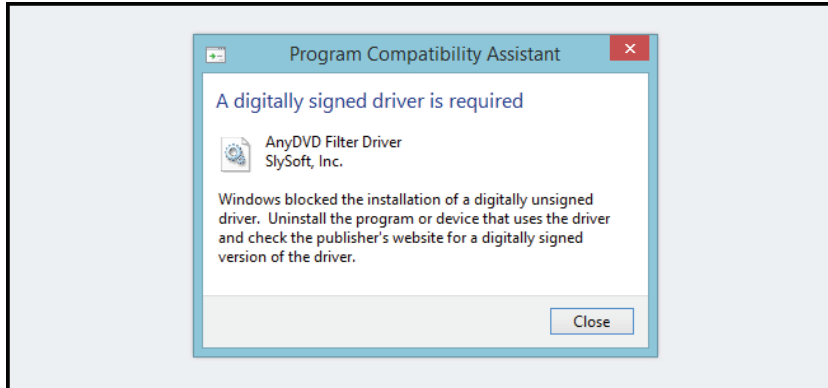


J-KEM Driver Installation Instructions

How to Disable Driver Signature Verification on 64-Bit Windows 8.1 (So That You Can Install Unsigned Drivers)

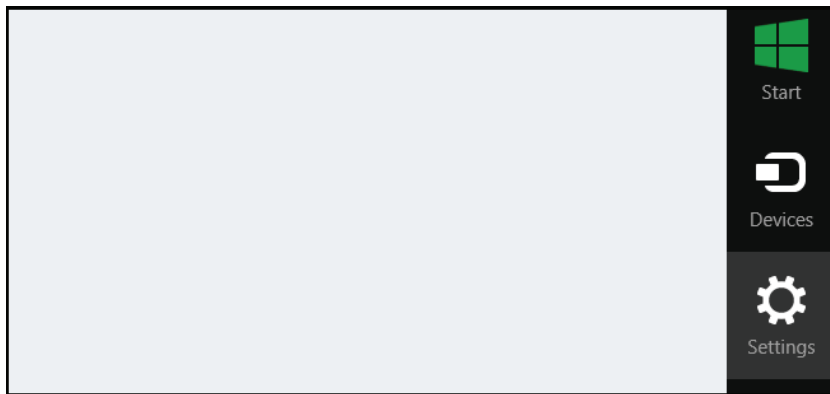


64-Bit editions of Windows require digitally signed drivers. The problem is that many devices ship with unsigned drivers. Today, we'll show you how to install them regardless.

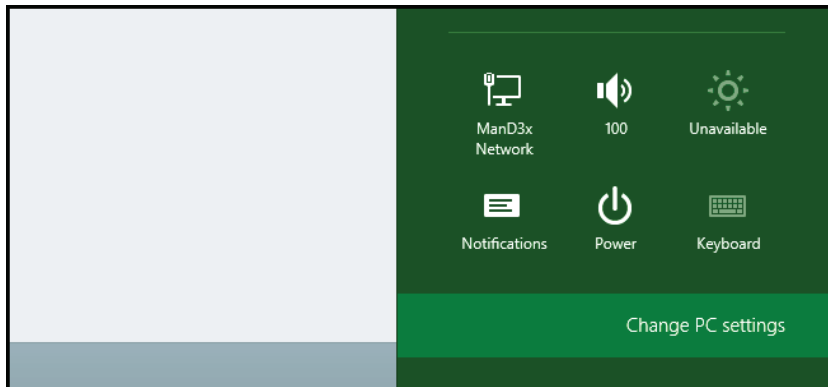
Digitally signed drivers include an electronic fingerprint that indicates which company the driver was produced by as well as an indication as to whether the driver has been modified since the company released it. This increases security, as a signed driver that has been modified will no longer have an intact signature. Drivers are signed using code signing certificates.

How to Disable Driver Signature Verification on 64-Bit Windows 8.1

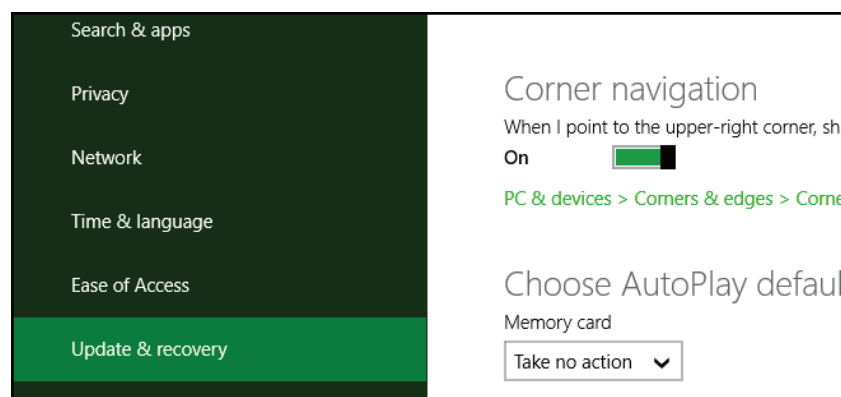
Press the Win + C keyboard combination to bring up the Charms Bar, then click on the Settings Charm.



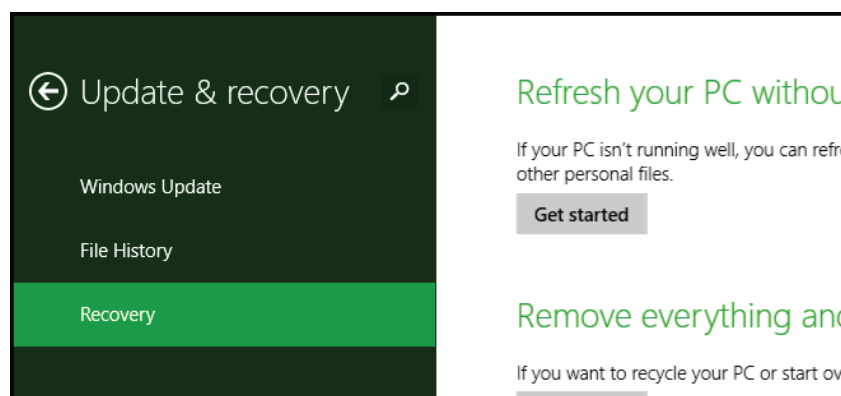
We need to head into the Modern Control Panel, so go ahead and click on the Change PC settings link.



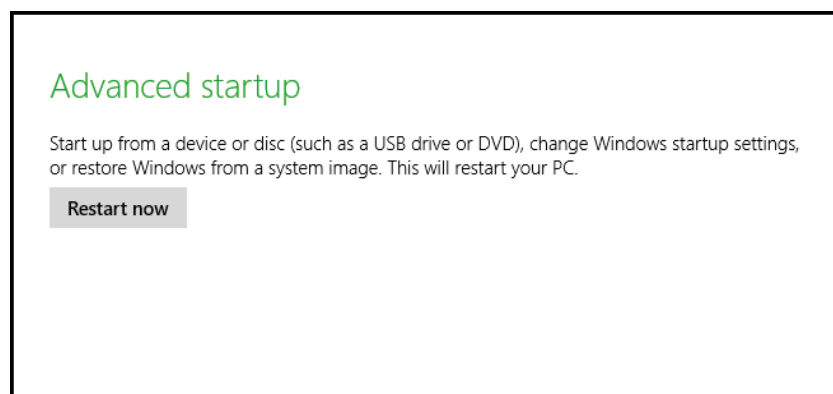
When the Control Panel opens, switch over to the "Update & recovery" section.



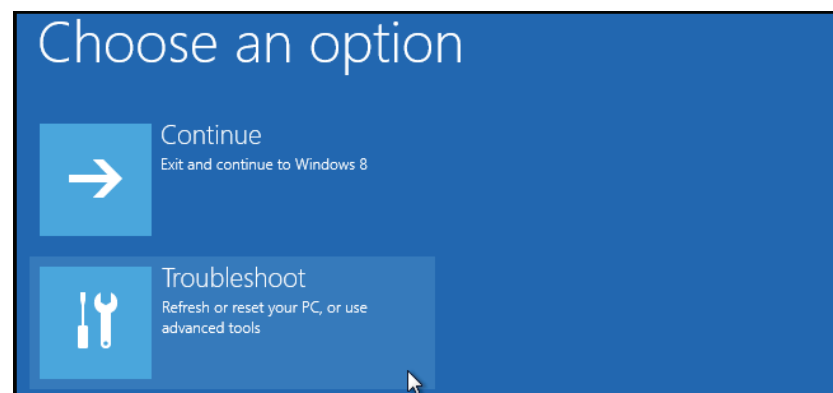
Then click on the Recovery option on the left hand side.



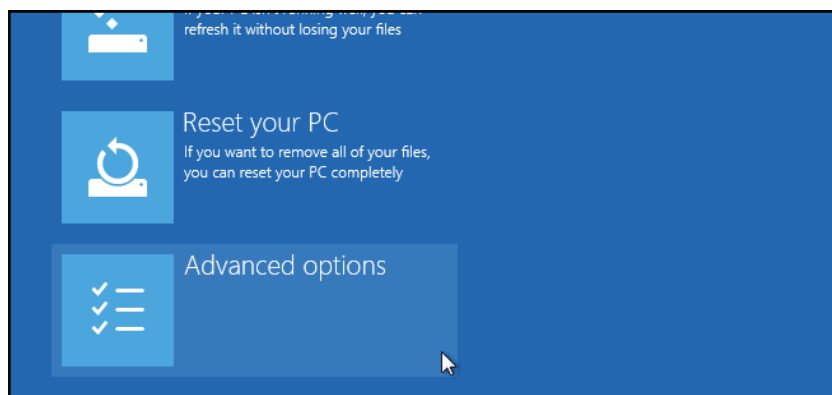
Once selected, you will see an advanced startup section appear on the right hand side. You will need to click on the "Restart now" button.



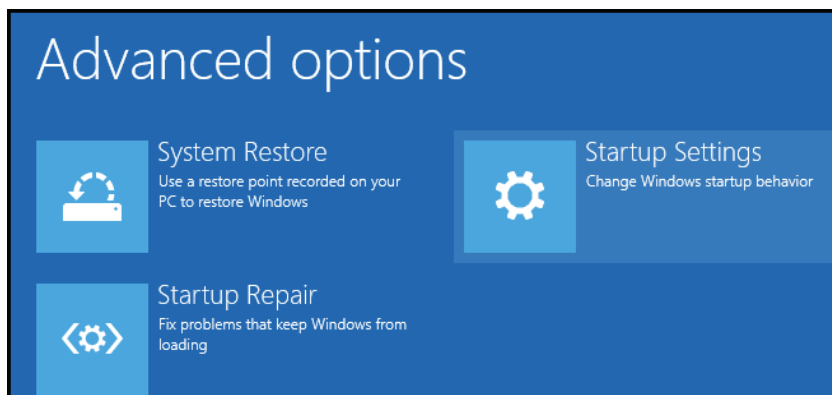
Once your Computer has rebooted you will need to choose the Troubleshoot option.



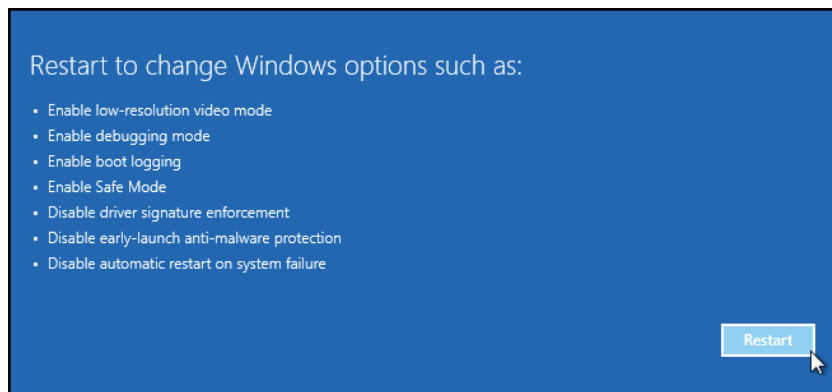
Then head into Advanced options.



Then Startup Settings.



Since we are modifying boot time configuration settings, you will need to restart your Computer one last time.



Finally, you will be given a list of startup settings that you can change. The one we are looking for is "Disable driver signature enforcement". To choose the setting, you will need to press the F7 key.

Startup Settings

Press a number to choose from the options below:

Use number keys or functions keys F1-F9.

- 1) Enable debugging
- 2) Enable boot logging
- 3) Enable low-resolution video
- 4) Enable Safe Mode
- 5) Enable Safe Mode with Networking
- 6) Enable Safe Mode with Command Prompt
- 7) Disable driver signature enforcement
- 8) Disable early launch anti-malware protection
- 9) Disable automatic restart after failure

That's all there is to it. Your PC will then reboot and you will be able to install unsigned drivers without any error message



* Please note that this is a one boot option. When the PC is rebooted, enforcement will be in effect again. This will not affect the driver once it is installed.



J-KEM Scientific, Inc.

6970 Olive Blvd.
St. Louis, MO 63130

(314) 863-5536

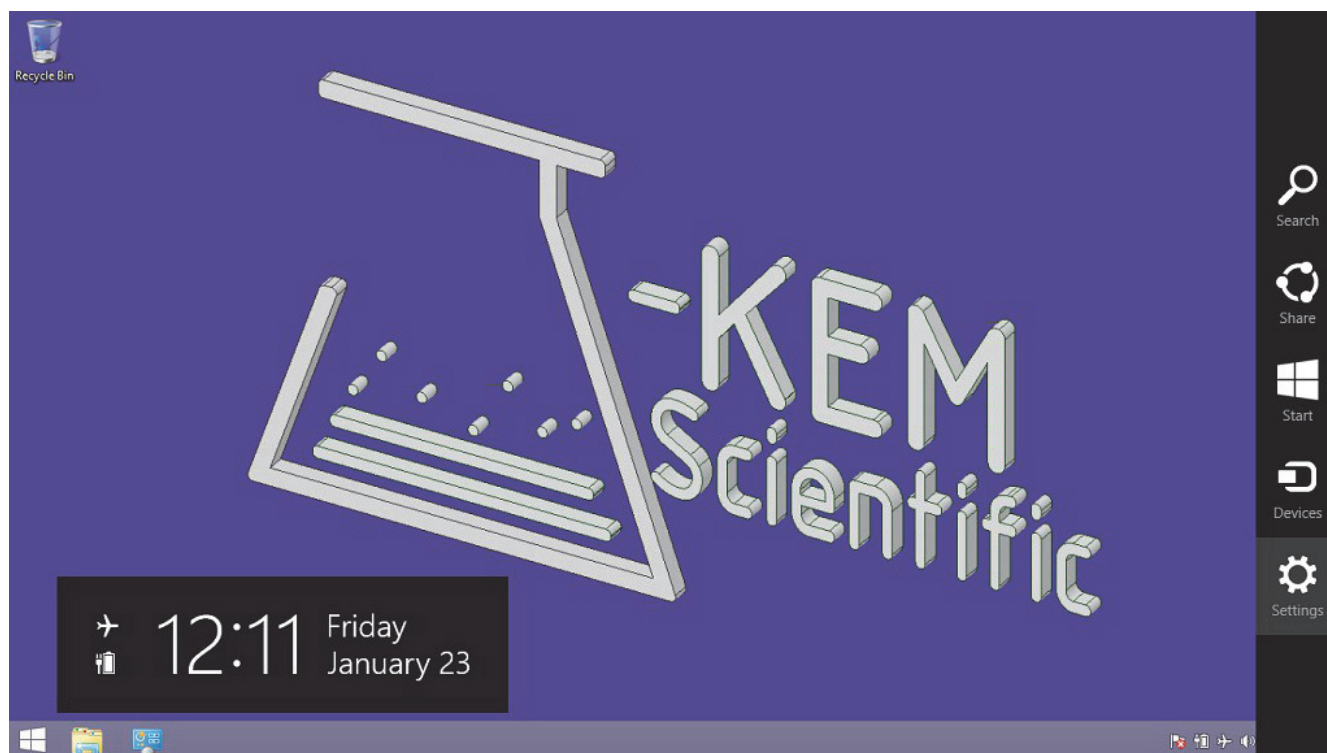
Fax: (314) 863-6070

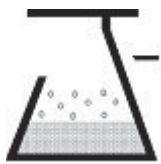
E-Mail: jkem911@jkem.com

Instructions for Installing J-KEM Controller Drivers

To install drivers under Windows 8.1, follow the instructions below:

Connect the J-KEM Controller to a spare USB port on your PC. Then drag the mouse cursor to the lower right corner or press the Win + C keyboard combination to bring up the Charms Bar and click on "Settings".





-KEM Scientific, Inc.
Instruments for Science from Scientists

J-KEM Scientific, Inc.

6970 Olive Blvd.

St. Louis, MO 63130

(314) 863-5536

Fax: (314) 863-6070

E-Mail: jkem911@jkem.com

Next, click on "Control Panel".

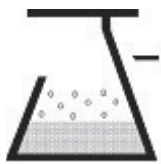


From the Control Panel window select “Hardware and Sound”.



At the next screen select “Device Manager”.

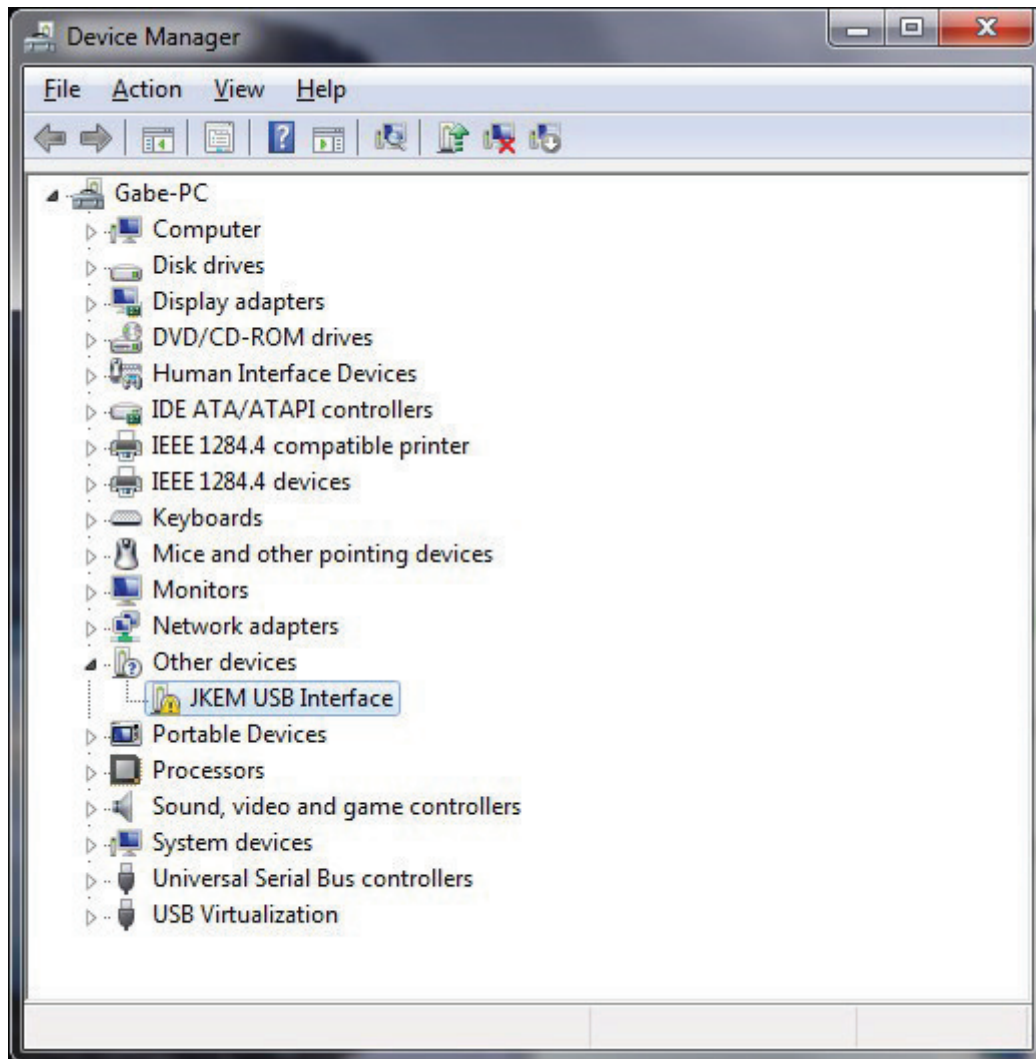




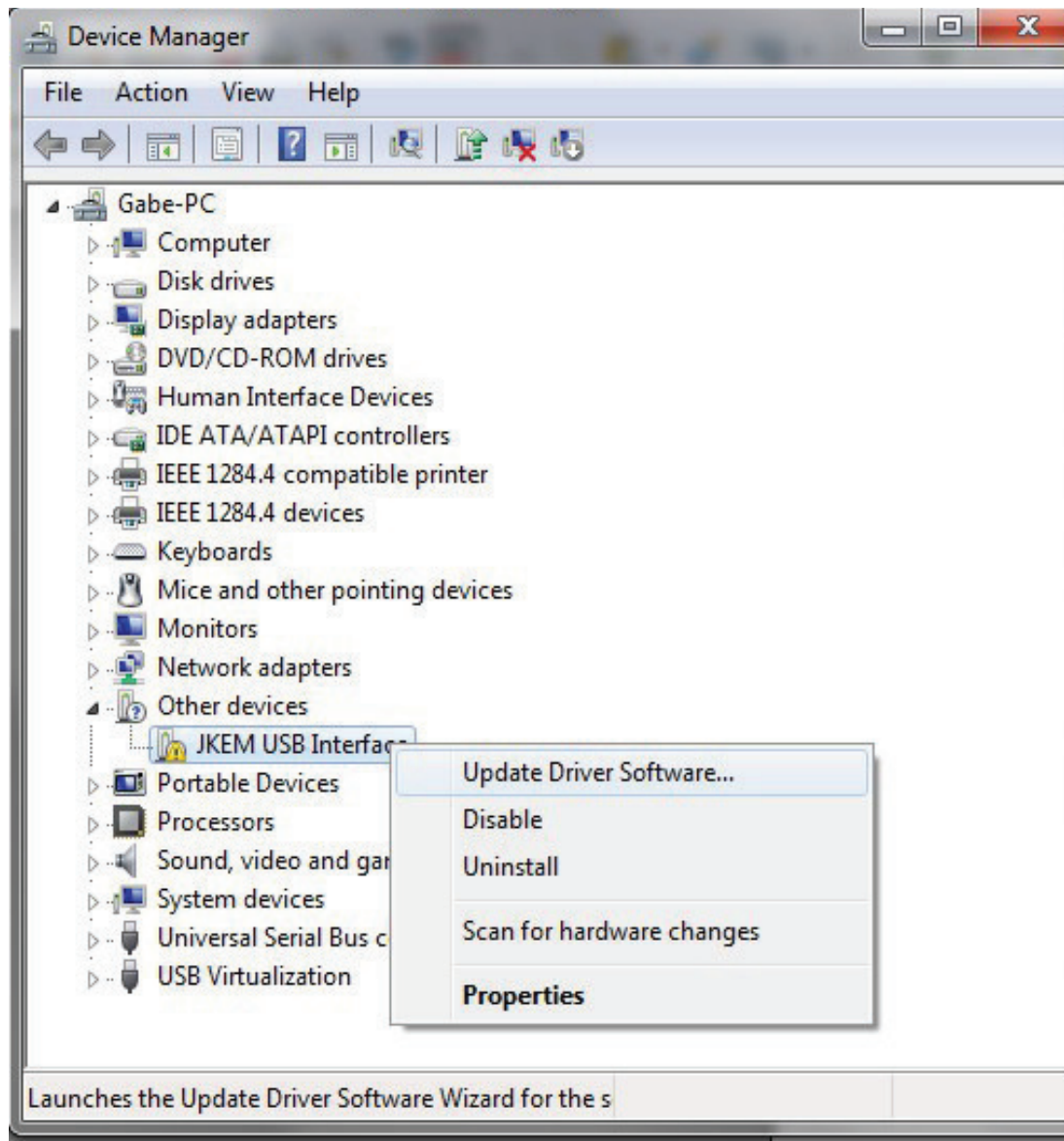
J-KEM Scientific, Inc.
Instruments for Science from Scientists

J-KEM Scientific, Inc.
6970 Olive Blvd.
St. Louis, MO 63130
(314) 863-5536
Fax: (314) 863-6070
E-Mail: jkem911@jkem.com

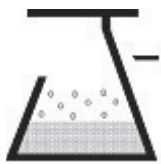
In the Device Manager window there will be a device under “Other Objects” with a yellow warning symbol to indicate a problem, i.e. no driver installed. The text next to this device will depend on the device attached. In this example the device is a J-KEM USB Interface device.



Right click on the “JKEM USB Interface” under Other devices to bring up a menu as shown below:



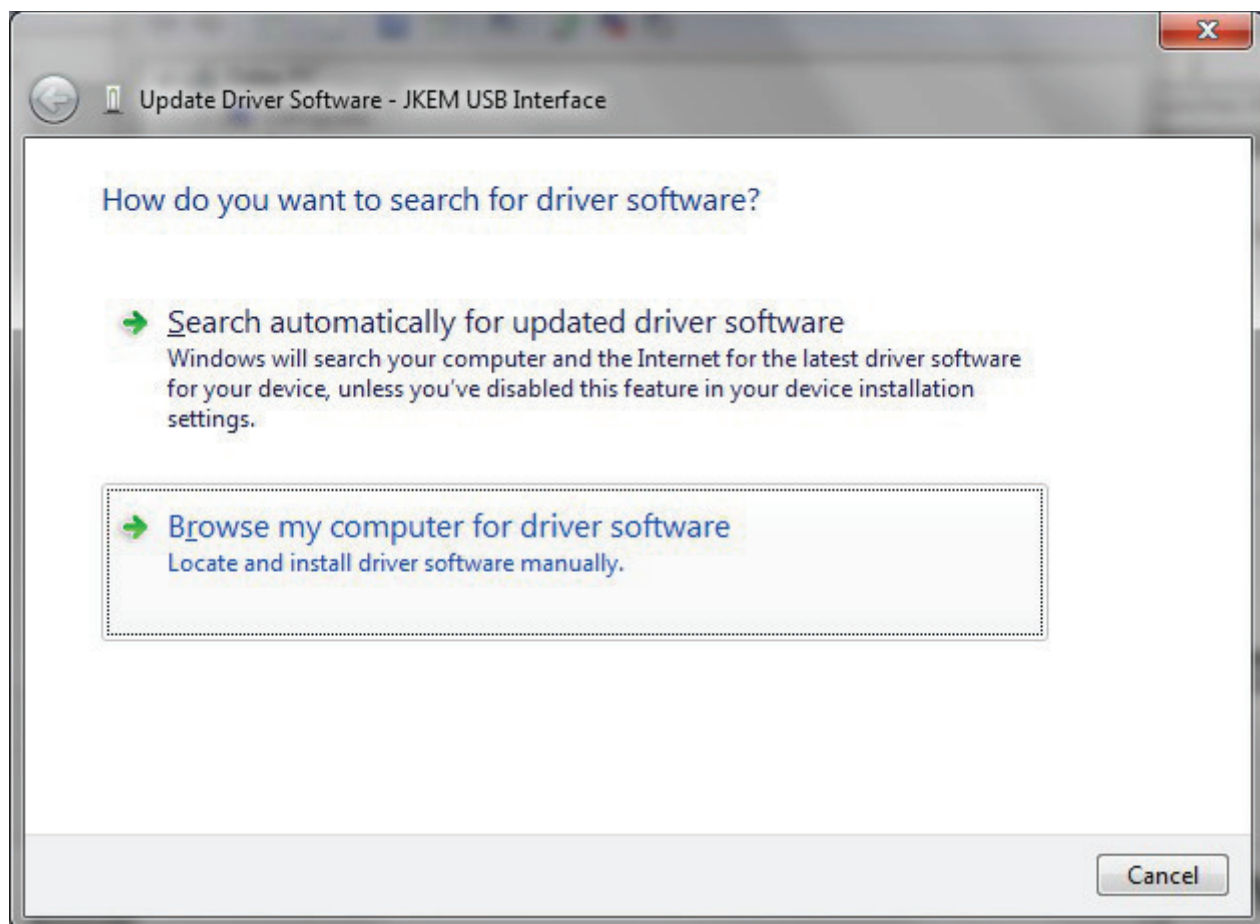
Select “Update Driver Software” from this menu.



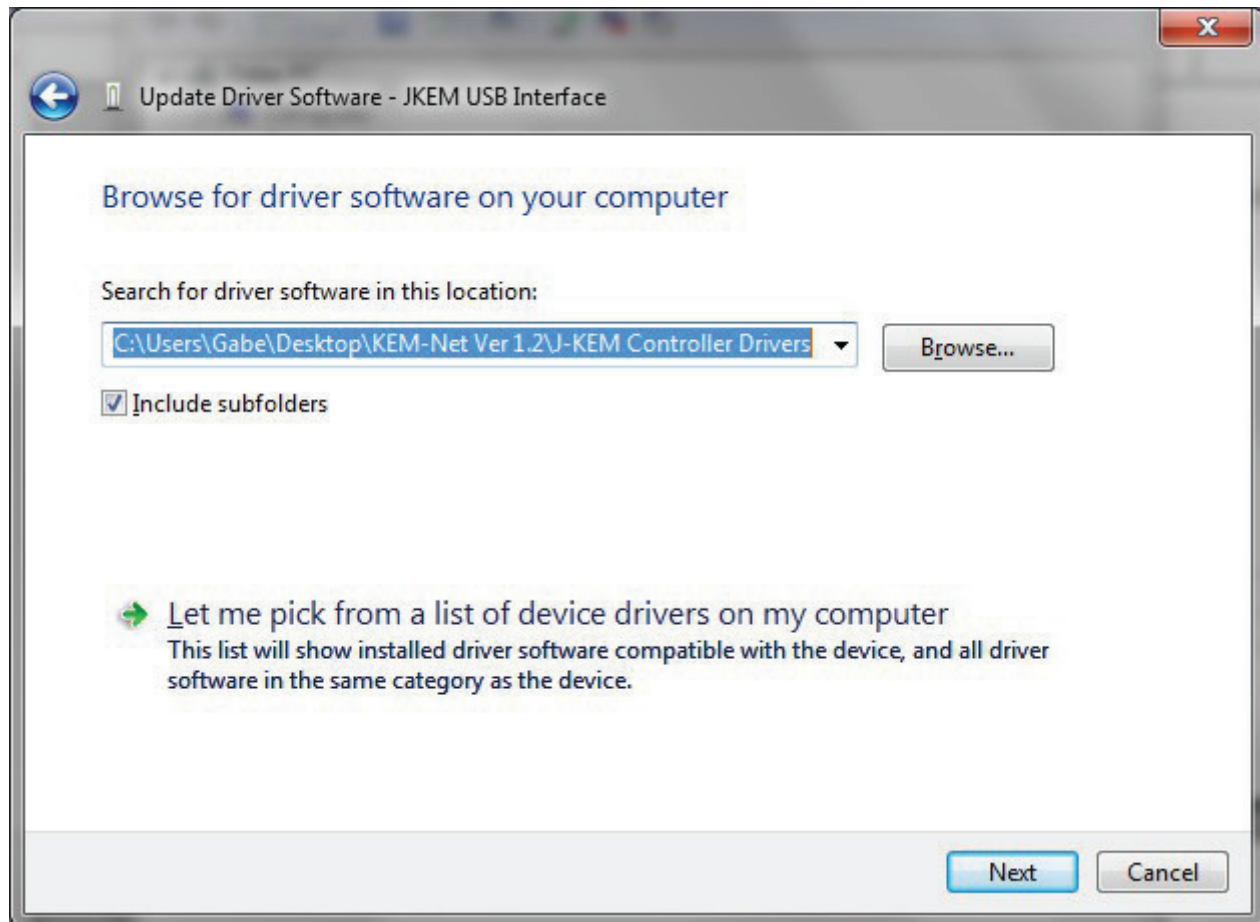
J-KEM Scientific, Inc.
Instruments for Science from Scientists

J-KEM Scientific, Inc.
6970 Olive Blvd.
St. Louis, MO 63130
(314) 863-5536
Fax: (314) 863-6070
E-Mail: jkem911@jkem.com

Then this displays the option for an automatic search or a manual search.
Select the “Browse my computer for driver software” option.



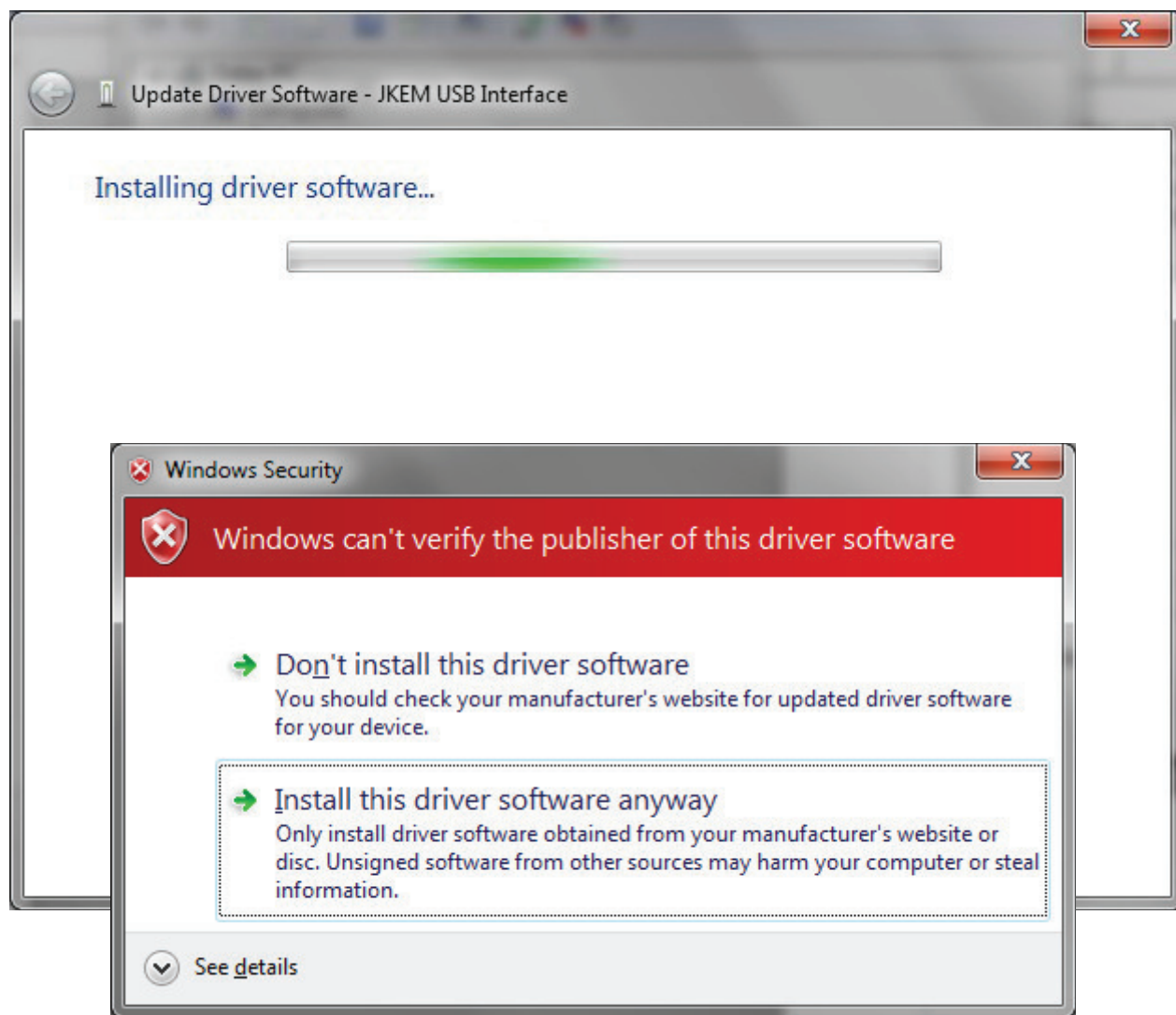
This screen will appear:



In the address bar put the exact location where the drivers are saved. If you don't remember the exact address you may need to click on the "Browse" button to locate the file. The "J-KEM Controller Drivers" folder is a sub-folder of the "KEM-Net Ver 1.2" folder which is the one you downloaded from the J-KEM website. In this example, the folder is located on the Desktop, but you may have saved the file in a different location. Locate the folder on your computer and click "OK".

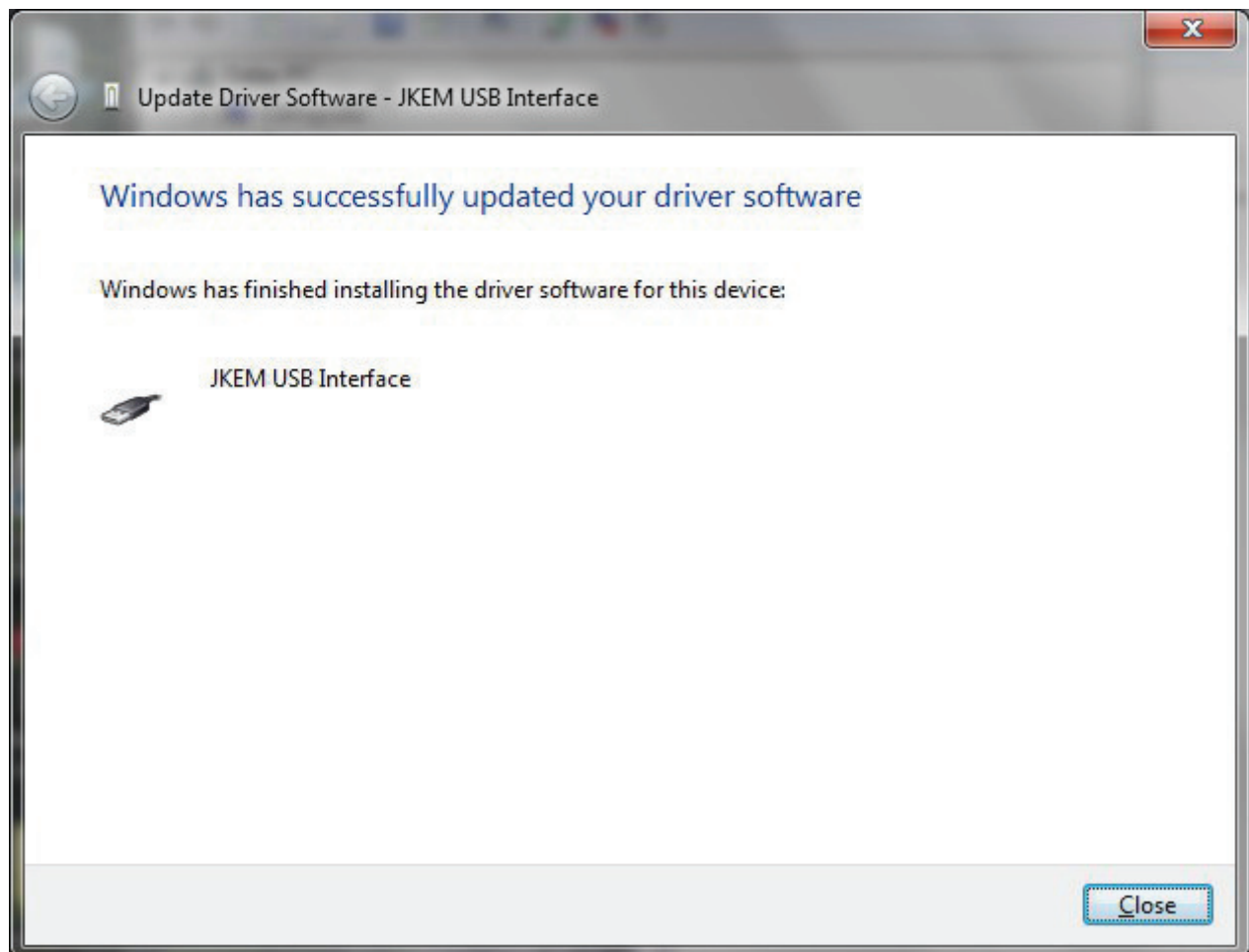
Once the file is located select "Next" to start the installation.

You will see this:

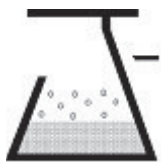


Click "Install this driver software anyway".

Then this screen will appear:

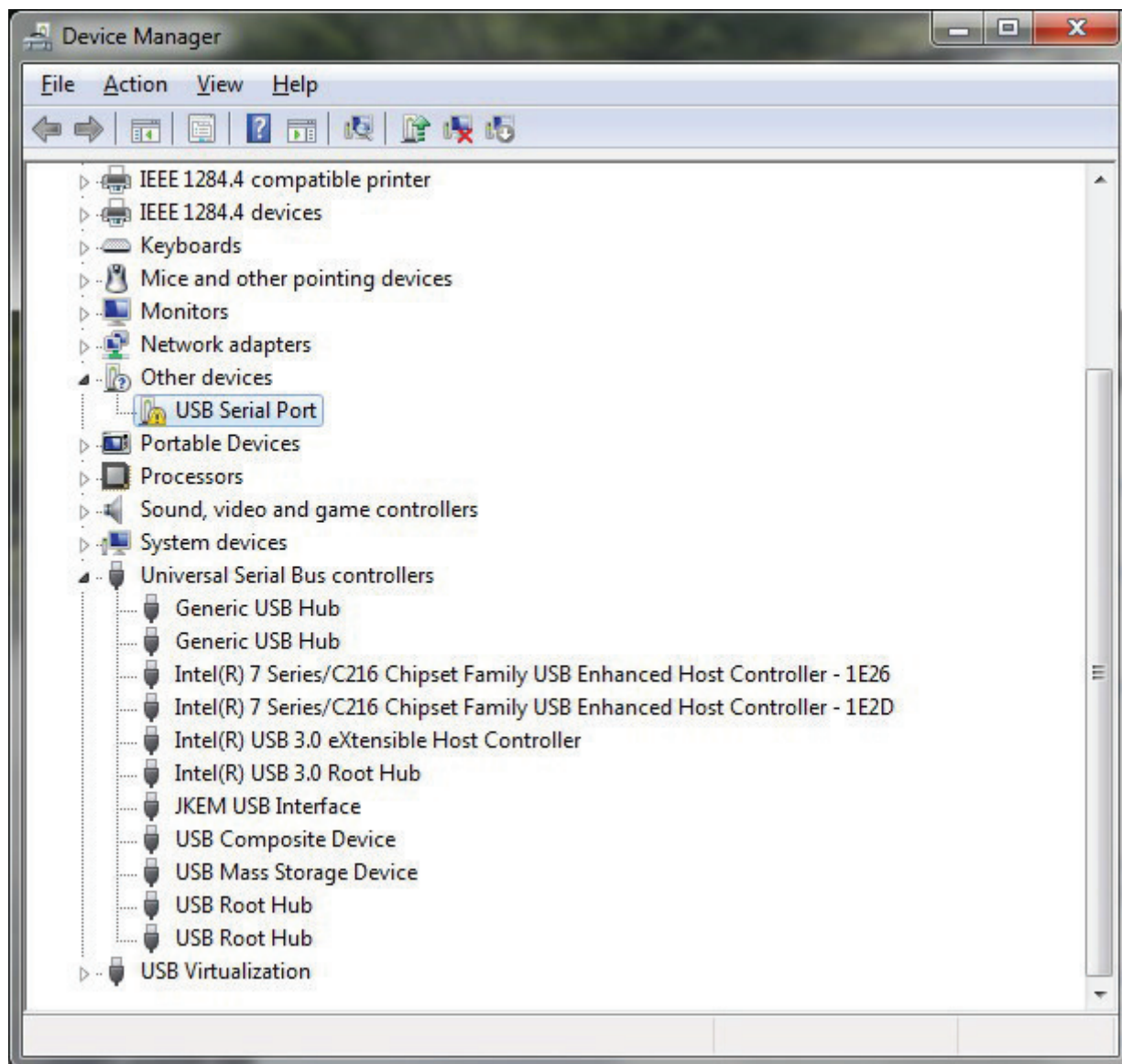


Select "Close" and go back to the Device Manager window.

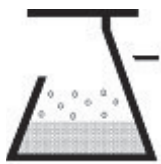


J-KEM Scientific, Inc.
Instruments for Science from Scientists

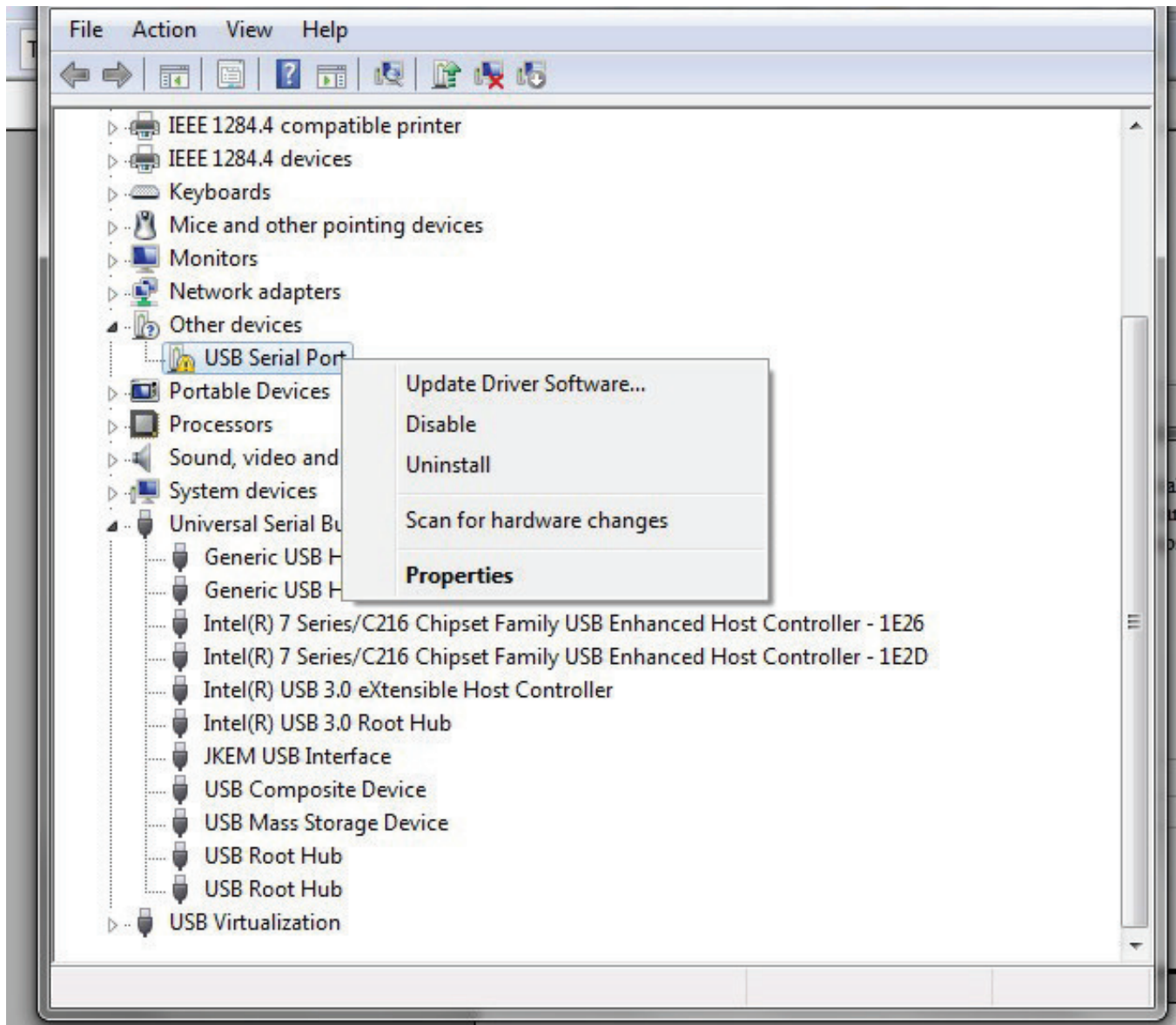
J-KEM Scientific, Inc.
6970 Olive Blvd.
St. Louis, MO 63130
(314) 863-5536
Fax: (314) 863-6070
E-Mail: jkem911@jkem.com



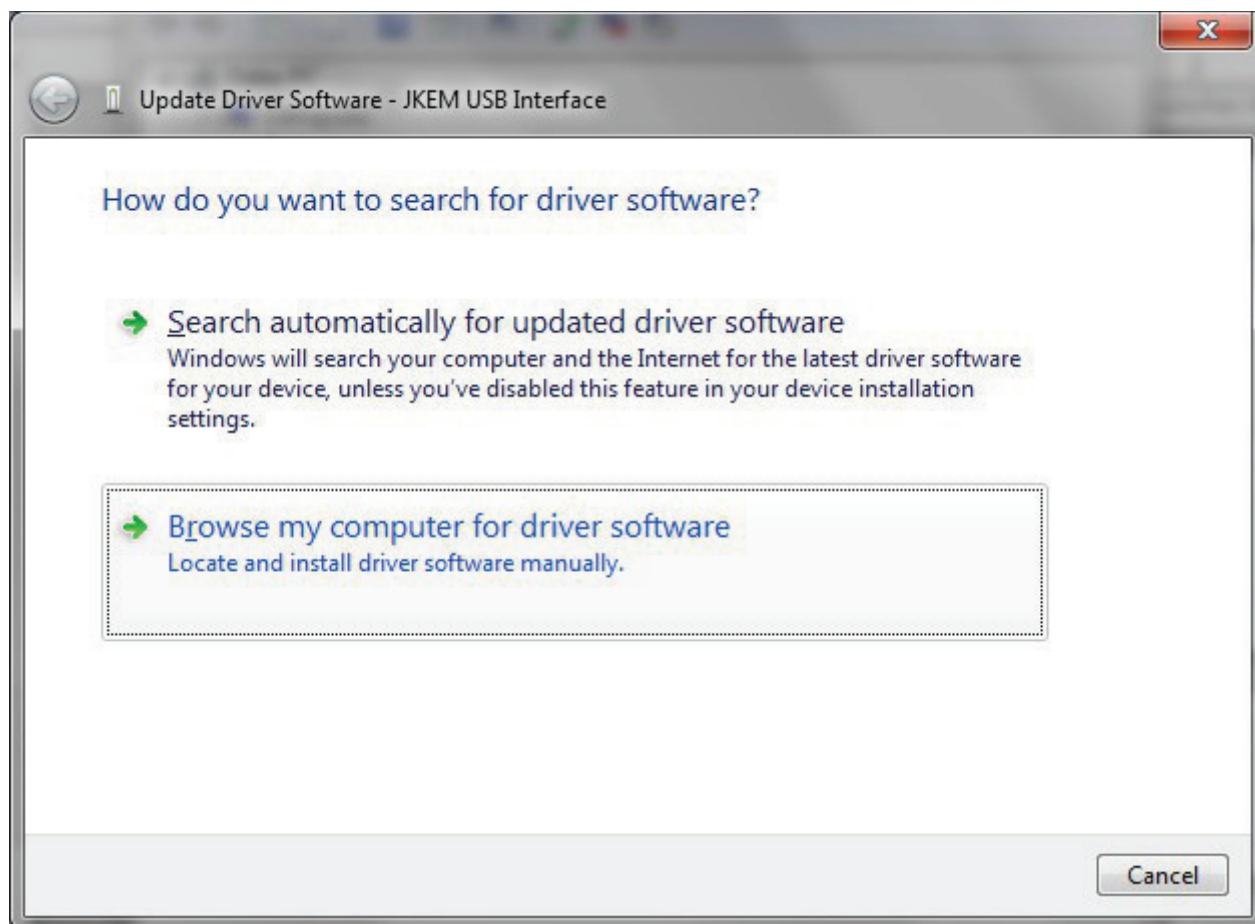
You will now see a new entry under the “Universal Serial Bus controllers” list which says “JKEM USB Interface”. This indicates the bus layer of the driver is installed, but we are not done yet. We still need to install the Virtual Com Port layer of the driver which is almost a repeat of the last few steps. If you look under “Other devices” you will still see a little yellow warning sign at “USB Serial Port”.



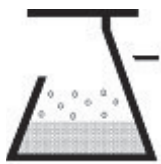
Right click on “USB Serial Port” as shown below and select “Update Driver Software...” from the menu.



You will see this:



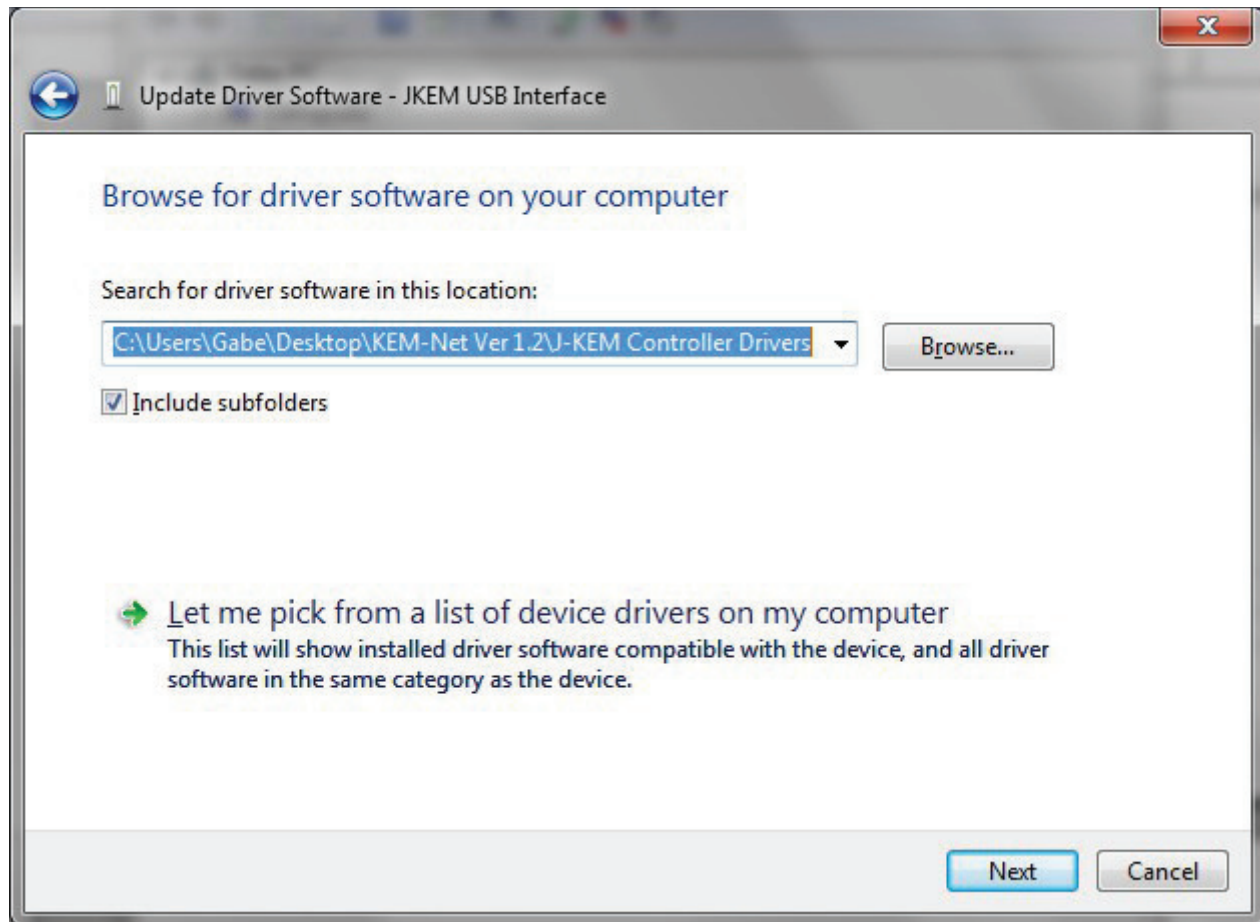
Select the "Browse my computer for driver software" option.



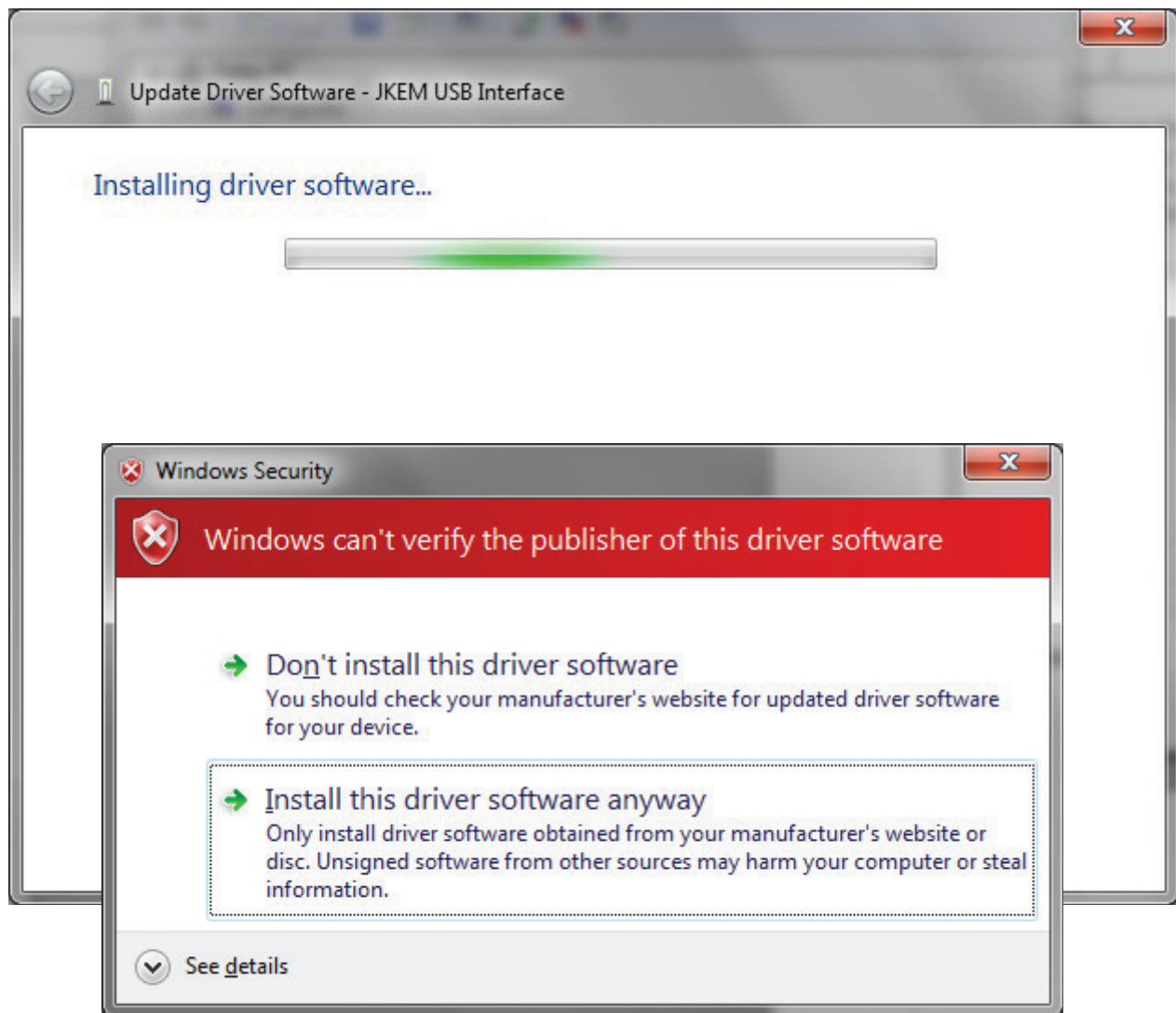
J-KEM Scientific, Inc.
Instruments for Science from Scientists

J-KEM Scientific, Inc.
6970 Olive Blvd.
St. Louis, MO 63130
(314) 863-5536
Fax: (314) 863-6070
E-Mail: jkem911@jkem.com

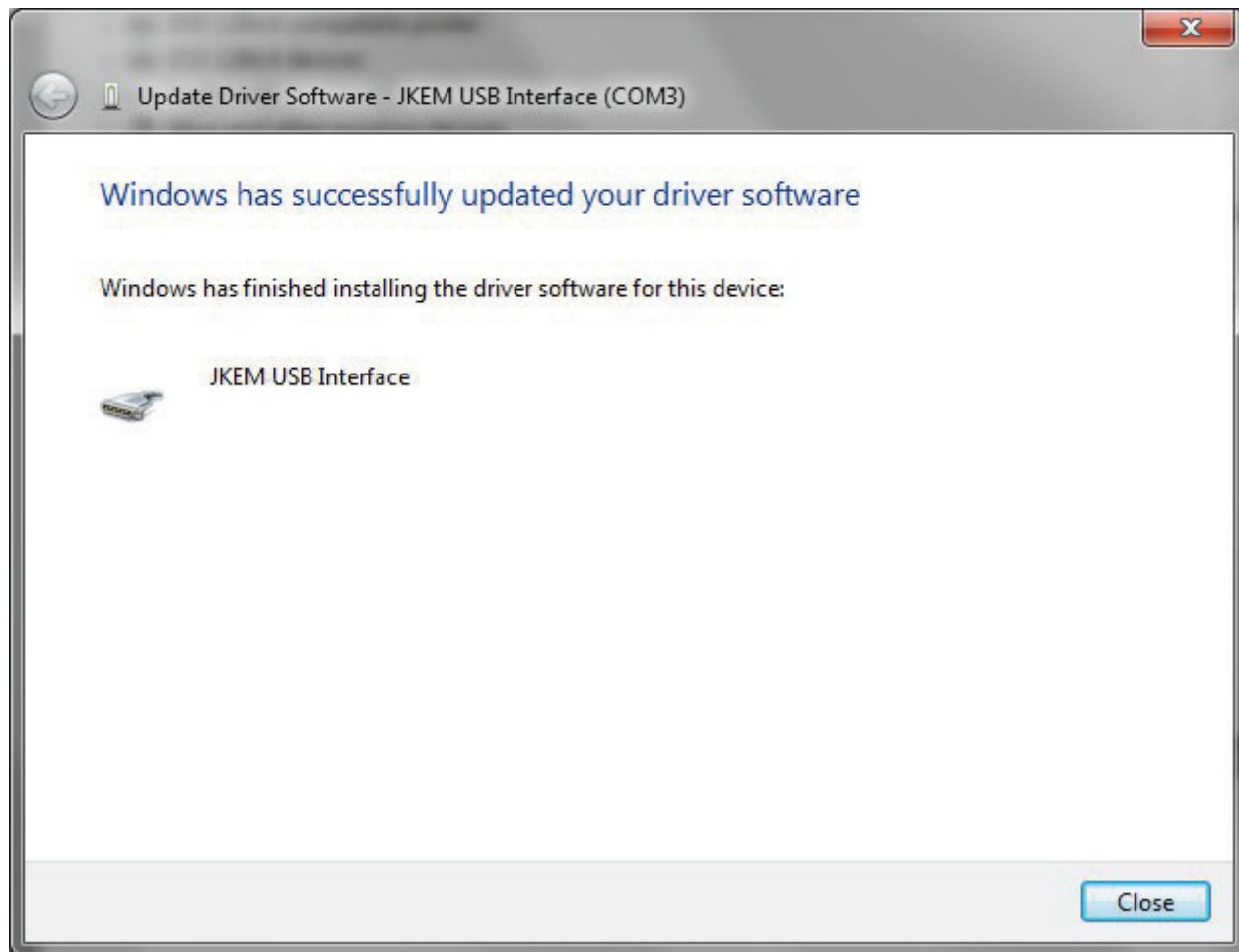
Once again, locate the “J-KEM Controller Drivers” folder and click “Next”.



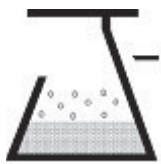
You will see this again:



You know what to do! Click “Install this driver software anyway”.



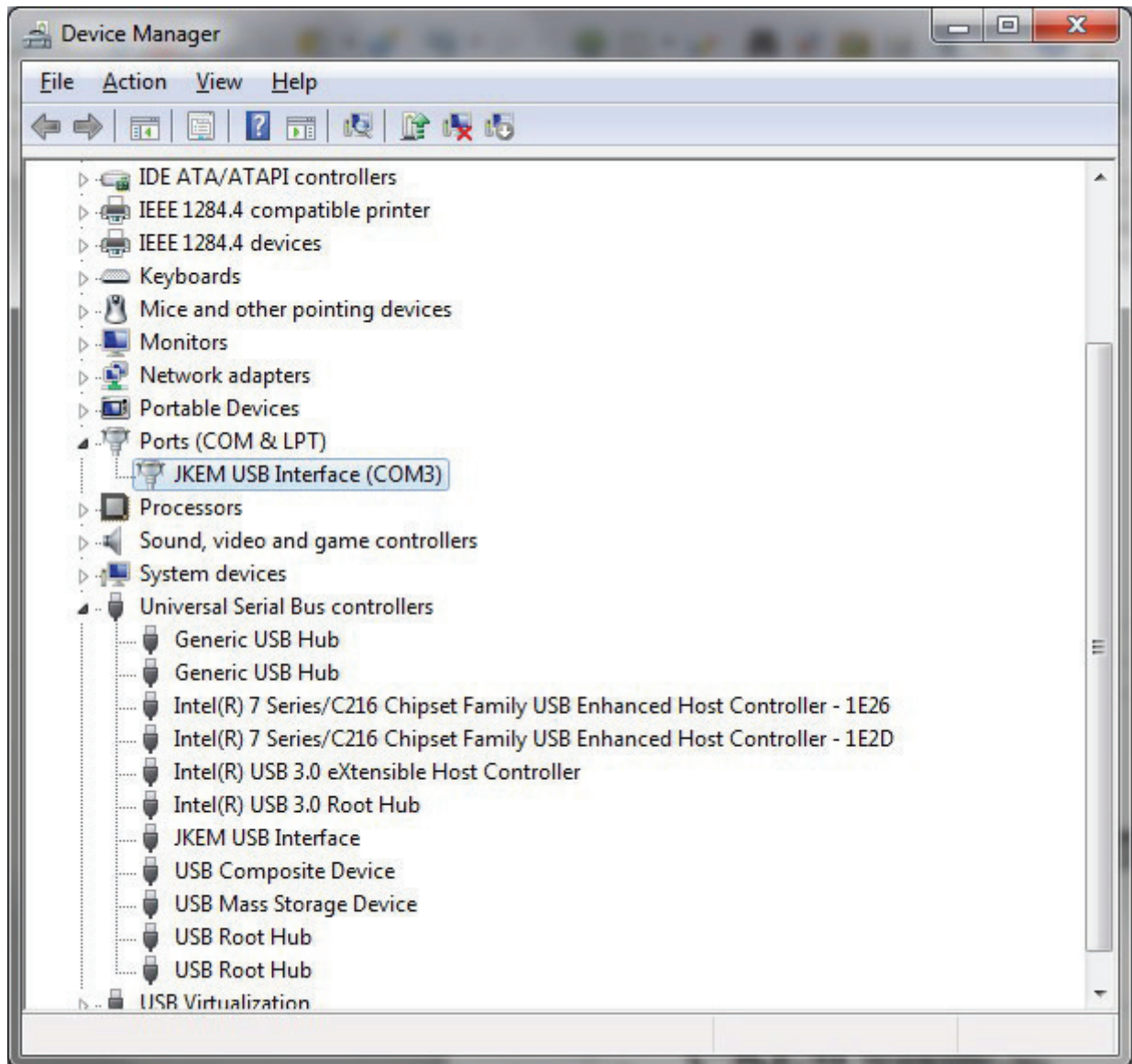
Note that this screen also displays the COM port (COM3 in this example) assigned to the device. Don't worry if your screen doesn't show COM3, your computer will probably allocate a different port. Click on the "Close" button and return to the Device Manager screen.



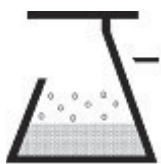
J-KEM Scientific, Inc.
Instruments for Science from Scientists

J-KEM Scientific, Inc.
6970 Olive Blvd.
St. Louis, MO 63130
(314) 863-5536
Fax: (314) 863-6070
E-Mail: jkem911@jkem.com

This time the Device Manager doesn't have a "USB Serial Port" entry under "Other devices" but does show entries under "Universal Serial Bus controllers" and "Ports(COM &LPT)". The screen below shows a correct installation and the device is ready to use on COM3.



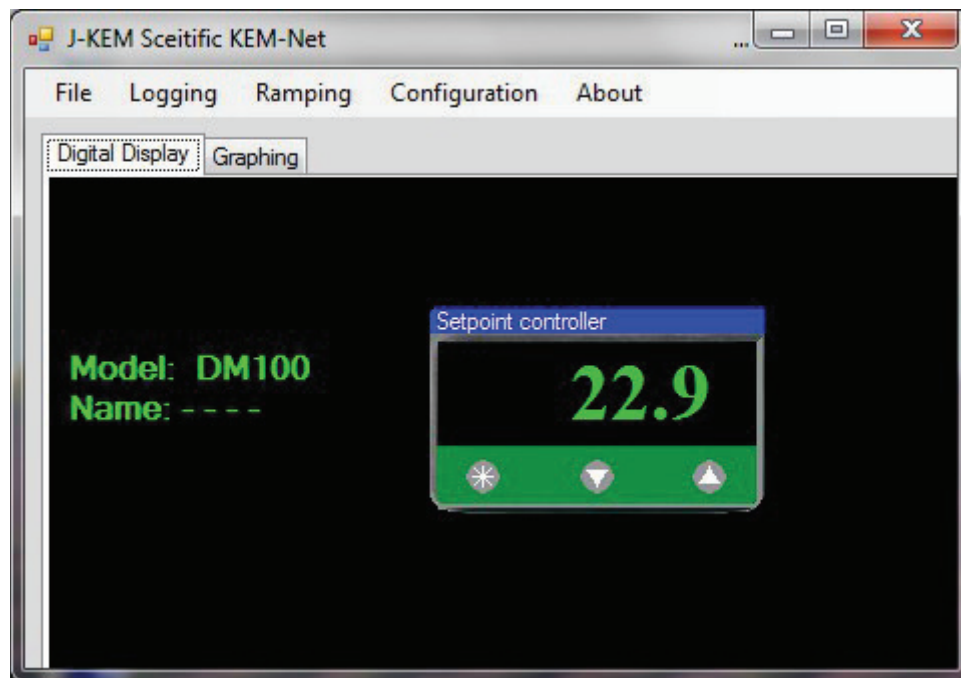
You can now close the Device Manager window and start the KEM-Net software.



J-KEM Scientific, Inc.
Instruments for Science from Scientists

J-KEM Scientific, Inc.
6970 Olive Blvd.
St. Louis, MO 63130
(314) 863-5536
Fax: (314) 863-6070
E-Mail: jkem911@jkem.com

After you start the KEM-Net software you should see a meter on you screen as below and it should be reading the same number as on your physical controller.



Congratulations!! You are now in control!